



DESMI 48 Fast Track

Pump Replacement Within 48 hours

DESMI 48 Fast Track Service

Do you need to replace any of your main pumps?

DESMI has replacement pumps for the following applications (but not limited to):

- SW cooling pump
- FW cooling pump
- Ballast pump
- Fire pump
- Bilge pump
- HVAC
- Fuel Oil Transfer
- Fuel Feed and Booster
- Lube Oil



DESMI 48 is a fast track service concept which means that we can supply vertical in-line centrifugal pumps, horizontal self-priming pumps or internal gear pumps within two working days* (or 48 hours).

See our website <http://www.desmi.com/products.aspx> for more information on products and videos.

Please send your enquiry to desmi@desmi.com or contact us at ☎+45 96 32 81 11.



ESL



ROTAN® Gear Pump



Modular S

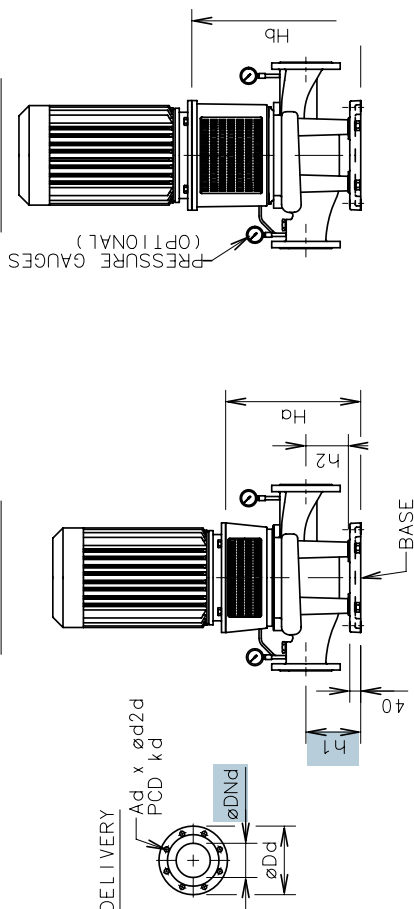
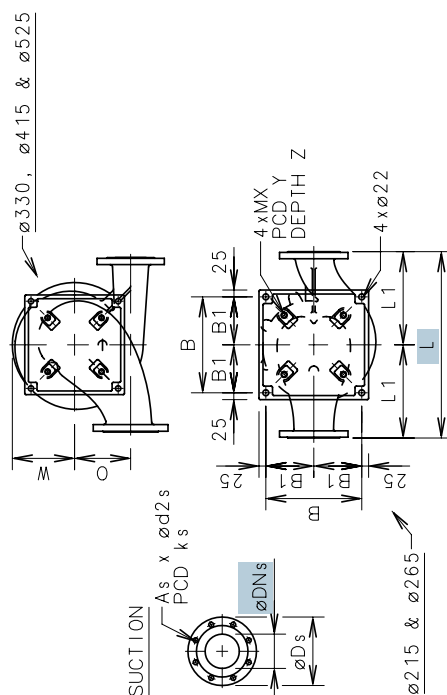


NSL



* Add two working days for certification from major classification societies.

With Bearing in Pump
MONOBLOC -02



CAPACITY RANGE 60 HZ																										
PUMP TYPE	SUCTION+FLANGE				BASE PLATE/PUMP CASING										DELIVERY - FLANGE					WEIGHT _{T₀}			FLOW	HEAD	Max.	Min.
	As	d2s	ks	DNs	Ds	B	B1	O	L	LI	W	ht	h2	H	Ad	d2d	kd	DNd	Dd	A12/D12	A02/D02	m3/h				
NSL 80-215	8	18	160	80	200	350	175	0	530	265	163	200	155	567	8	18	160	80	200	-	126/141	15	9	100	7	
NSL 80-265	8	18	160	80	200	350	175	0	580	290	193	200	155	574	8	18	160	80	200	-	135/152	20	14	140	9.3	
NSL 80-330	8	18	180	100	235	350	175	200	600	300	250	260	215	738	8	18	160	80	200	-	256/261	35	17	160	7.5	
NSL 100-215	8	18	180	100	220	350	175	0	580	290	181	200	155	587	8	18	180	100	220	-	137/154	50	9	185	6	
NSL 100-265	8	18	180	100	220	350	175	0	630	315	193	200	155	593	8	18	180	100	220	-	136/153	60	13	190	9	
NSL100-330	8	18	210	125	270	350	175	210	650	325	250	260	215	743	8	18	180	100	235	-	261/267	80	6	200	3.3	
NSL 100-415	8	18	210	125	270	500	250	250	700	350	275	260	215	761	8	18	180	100	235	-	379/399	85	8.5	210	5	
NSL 125-215	8	18	210	125	250	350	175	0	630	315	203	200	155	600	8	18	210	125	250	-	148/163	80	8.5	280	6.8	
NSL 125-265	8	18	21	125	250	350	175	0	680	340	227	200	155	617	8	18	210	125	250	-	154/175	90	10	300	8	
NSL 125-330	8	22	240	150	300	350	175	225	700	350	250	300	255	788	8	18	210	125	270	-	276/282	100	5	300	3.8	
NSL 125-415	8	22	240	150	300	500	250	260	750	375	278	300	255	799	8	18	210	125	270	-	414/434	100	8.5	320	5	
NSL 150-215	8	22	240	150	285	350	175	0	680	340	239	230	185	636	8	22	240	150	285	-	167/191	50	2.2	270	1.1	
NSL 150-265	8	22	240	150	285	350	175	0	730	365	250	200	155	640	8	22	240	150	285	-	172/197	100	3.4	380	1.8	
NSL 150-330	8	22	295	200	360	500	250	235	750	375	275	300	255	799	8	22	240	150	300	-	339/329	130	5.5	530	3	
NSL 150-415	8	22	295	200	360	500	250	275	800	400	293	340	295	845	8	22	240	150	300	-	454/474	160	8.6	560	5	
NSL 200-265	8	23	295	200	340	350	175	0	780	390	290	260	215	681	8	23	295	200	340	-	207/240	150	3	450	1.8	
NSL 200-330	12	22	350	250	425	500	250	260	900	450	301	340	295	842	8	22	295	200	360	-	409/394	200	5	720	3	
NSL 250-265	12	22	350	250	405	350	175	0	800	400	324	260	215	727	12	22	350	250	405	-	301/341	200	3.2	600	2.2	
ESL 25-180	4	14	85	68	115	159	79.5	0	300	150	125	100	-	254	4	14	85	68	115	30/32	-	2	5.9	11	4.9	
ESL 40-180	4	18	110	88	150	159	79.5	0	350	175	127	120	-	315	4	18	110	90	150	37/40	-	8	5.8	54	4.2	
ESL 50-180	4	18	125	102	165	170	85	0	400	200	150	105	-	290	4	18	125	102	165	41/44	-	15	5.6	85	4.2	
ESL 80-180	8	18	160	138	200	220	110	0	480	240	175	136	-	351	8	18	160	138	200	60/62	-	30	5.3	115	4.1	

3

Fast Track DESMI NSL Centrifugal Pump

The DESMI NSL pump is a vertical in-line, radially split, single-stage centrifugal pump with connecting flanges according to international standards. The pump is designed to be coupled with electric motors.

The pump casing is equipped with a replaceable wear ring.

The impeller is made with double-curved blades to ensure low NPSH-values and high efficiency.

Shaft in stainless steel with mechanical shaft seal of an approved brand is standard.

The pump can be equipped with an air-driven or electric driven priming device.

50 Hz:	60 Hz:
Pressure range: 1.8-7 bar 66-235 ft	Pressure range: 1.8-10 bar 60-335 ft
Capacity range: 15-600 m³/h 66-2640 US gpm	Capacity range: 15-720 m³/h 66-3170 US gpm
Liquid temperature range: With standard mech. shaft seal max. 80°C - 176°F With special mech. shaft seal max. 140°C - 284°F	

Material specification	A	D
Pump casing	Cast iron	Bronze
Impeller	NiAl-bronze	NiAl-bronze
Wear ring	NiAl-bronze	NiAl-bronze
Shaft seal cover	Cast iron	Bronze
Shaft	Duplex St. steel (1.4460)	Duplex St. steel (1.4460)
Shaft seal	Mechanical	Mechanical



Fast Track DESMI ESL Centrifugal Pump

50 Hz:	60 Hz:
Pressure range: 2-5 bar 66-167 ft	Pressure range: 4-5.9 bar 130-200 ft
Capacity range: 2-80 m³/h 8-355 US gpm	Capacity range: 2-115 m³/h 18-507 US gpm
Liquid temperature range: With standard mech. shaft seal max. 80 °C - 176 °F. With special mech. shaft seal max. 140 °C - 284 °F.	

Material specification	A	D
Pump casing	Cast Iron	Bronze (RG 5)
Impeller	NiAl-bronze	NiAl-bronze
Wear ring	NiAl-bronze	NiAl-bronze
Rear cover	Cast iron	Bronze (RG 5)
Shaft	Duplex St. steel (1.4460)	Duplex St. steel (1.4460)
Shaft seal	Mechanical	Mechanical

ESL pumps are single-stage centrifugal pumps equipped with mechanical shaft seal for maximum life and minimum friction loss.

The pump is also available with a priming device.



Fast Track Modular S Centrifugal Pump

DESMI MODULAR S pumps are self-priming pumps. Based on many years of experience in the production of self-priming pumps we supply a pump series that meets the future demands for economical and reliable pumps.

The individual design, compact with a clear-cut cylindrical form, together with the practical advantages such as easy assembling and MODULAR construction of all components ensure a long and trouble-free operation.

The success of the DESMI pumps is among other things due to the priming principle.

This principle means that the MODULAR S can pump a mixture of air and liquid and thus evacuate air from the suction pipe, meaning that an additional priming device is not needed.



50 Hz:	60 Hz:
Pressure range: 1-19 bar 30-300 ft	Pressure range: 2-14 bar 60-460 ft
Capacity range: 1-350 m³/h 5-1500 US gpm	Capacity range: 2-400 m³/h 10-1760 US gpm
Liquid temperature range: With standard mech. shaft seal max. 80°C - 176°F With special mech. shaft seal max. 120°C - 284°F	

Material specification	A	D
Pump casing	Cast Iron	Bronze (RG 5)
Impeller	NiAl-bronze	NiAl-bronze
Shaft	Duplex St. steel (1.4460)	Duplex St. steel (1.4460)
Shaft seal	Mechanical	Mechanical

Fast Track DESMI ROTAN® Internal Gear Pump

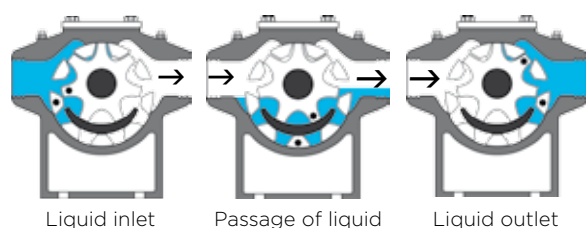
DESMI ROTAN® Pumps in cast iron, for clean, non-abrasive liquids. The simple and compact construction makes it a low-cost pump designed for use with IEC flange motors.

The ROTAN® internal gear pump provides favourable flow conditions, as the direction of the liquid flow is only changed slightly through the pump.

This means that superior self-priming capability and gentle liquid handling are achieved, and also that highly viscous liquids can be pumped.



Method of operation



Capacity Range	Up to 50 m³/h / 220 gpm
Speed	Up to 1750 rpm
Differential Pressure	Up to 16 bar / 232 psi
Suction Lift	Up to 0,5 / 7,25 psi bar vacuum while priming Up to 0,8 bar / 11.6 psi vacuum while pumping
Viscosity Range	Up to 7500 cSt
Temperature	Up to 150°C / 302°F

DESMI Genuine Spare Parts Kits



DESMI Genuine Spare Parts Kits for Simple Overhaul and Service

DESMI provides spare parts kits for easy and simple maintenance and overhaul of your pumps. We offer a variety of spare parts kits for a number of DESMI pump series.

To determine which spare parts kit you need and to provide you with the best service, we need you to supply us with the following information:

- **Pump type (e.g. NSL 150-265)**
- **Serial number (e.g. 323249 or 30192-1)**

Please send your enquiry to desmi@desmi.com or contact us at +45 96 32 81 11.

Spare Parts Kits include:

- Mechanical shaft seal
- Special tool
- Bearings
- O-rings
- Gaskets
- Washers & nuts
- Item list
- Etc.



Scan the QR code for easy access to overhaul videos, manuals, spare parts kits etc. or go to www.desmi.com/aftersales

- Spare parts kits overview
- Manuals
- Overhaul videos
- Request for spare parts kits
- Contacts
- Etc.



Genuine Spare Part Kits for various pump types at www.desmi.com/aftersales.aspx



For more information, please send your enquiry to desmi@desmi.com or contact us at +45 96 32 81 11.